

Space-Saving & Low Noise Type Hydraulic Power Units <YF Pack>

The Keywords are Cubic Structure

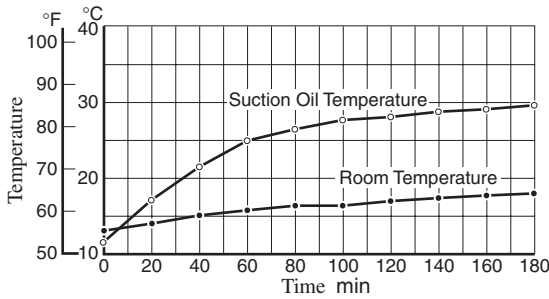
YF PACK are cubic integrated construction of Piston Pump, Electric Motor and Reservoir etc. Each function module linked directly together has allowed us to realize our pipeless concept which means no oil leakage.

Energy-Saving & Low Oil Temperature Rise

YF PACK save 10% of their energy consumption compared to YP pack. Improving cooling capacity reduced thermal radiation. Machines, in which YF PACK can be built, are free from heat distortion.

Temperature Rise

- Model Number: YF16-B-1-2.2-H-20
- Frequency: 50 Hz
- Pressure: Full-cut off at 7 MPa (1020 PSI), Continuous

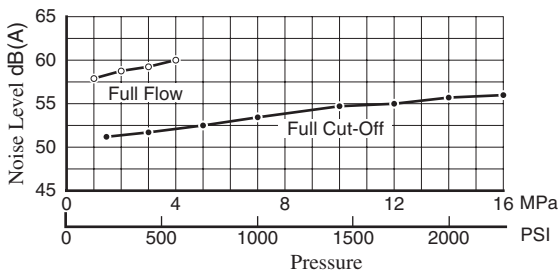


Noise Level 53 dB (A) & Low Vibration

We made the best of our hydraulic technology to take low noise and vibration. YUKEN has achieved noise level 53 dB (A).

Noise Level

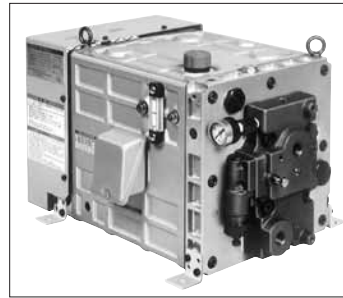
- Model Number: YF16 - C - 1 - 1.5 - H - 20
- One metre (3.3 ft.) horizontally away from YF Pack (average of five directions)
- Viscosity: 32 mm²/s (150 SSU) [ISO VG 32 Oils, 40 °C (104 °F)]
- Frequency: 50 Hz (1500 r/min)



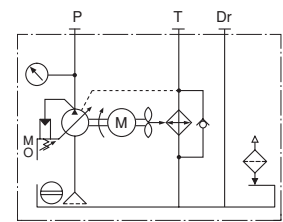
Specifications

Model Numbers	Geometric Displacement cm ³ /rev (cu.in. ³ /rev)	Pressure Adjustment Range MPa (PSI)	Reservoir Capacity L (Gal.)	Electric Motor (4 Poles), 200 V AC (50 Hz) 200/220 V AC (60 Hz)	Approx. Mass kg (lbs.)	
YF10-B-1-0.75-H-**-20*	10.0 (.610)	1.2- 7 (170-1020)	10 (2.6)	0.75 kW (1 HP)	44 (97)	
YF10-B-1-1.5-H-**-20*		1.2- 7 (170-1020)		1.5 kW (2 HP)	49 (108)	
YF10-C-1-1.5-H-**-20*		2.0-16 (290-2320)		1.5 kW (2 HP)	49 (108)	
YF16-B-1-1.5-H-**-20*	15.8 (.964)	1.2- 7 (170-1020)	10 (2.6)	1.5 kW (2 HP)	49 (108)	
YF16-B-1-2.2-H-**-20*				2.2 kW (3 HP)	51 (112)	
YF16-B-2U-2.2-H-**-20*				20 (5.3)	2.2 kW (3 HP)	57 (126)
YF16-B-2S-2.2-H-**-20*					2.2 kW (3 HP)	57 (126)
YF16-C-1-1.5-H-**-20*					1.5 kW (2 HP)	49 (108)
YF16-C-1-2.2-H-**-20*	15.8 (.964)	1.2-16 (170-2320)	10 (2.6)	2.2 kW (3 HP)	51 (112)	
YF16-C-2U-2.2-H-**-20*				20 (5.3)	2.2 kW (3 HP)	57 (126)
YF16-C-2S-2.2-H-**-20*					2.2 kW (3 HP)	57 (126)

Consult Yuken when detailed material such as dimensions figures is required.



Graphic Symbol



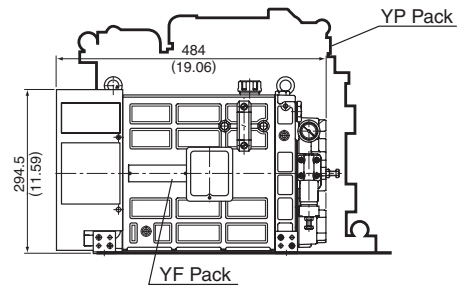
Options

You may have 10 options choosing various accessories: -size 005/01 base blocks (one station – three stations), thermo-sensor, pressure switch etc.

Set up Space Halved (compared to YP pack)

Smaller size and lighter weight of our unique cubic structure make YF PACK easy to build in various machines.

- Volume Reduced 50 % (Compared to YP Pack)
- Mass Reduced 30 % (Compared to YP Pack)



Model Number Designation

YF10 - B - 1 - 1.5 - H - * - * - * - 20 *

- | | | | | | | | | |
|---------------------------|-----------------------------|----------------------|------------------|--|------------------------------|-----------|--------------------|------------|
| ① | ② | ③ | ④ | ⑤ | ⑥ | ⑦ | ⑧ | |
| ① Geometric Displacement | ② Pressure Adjustment Range | ③ Reservoir Capacity | ④ Electric Motor | ⑤ Base Block Size.....5:005, 1:01 | ⑥ No. of Base Block Stations | ⑦ Options | ⑧ Design Standards | |
| } Refer to Specifications | | | | | | | | |
| | | | | } None: Without | | | | |
| | | | | 1: 1 Station, 2: 2 Stations, 3: 3 Stations | | | | Base Block |
| | | | | } Omit if not | | | | |
| | | | | M: Magnet Filter, L: Level Sensor | | | | Required |
| | | | | P: Pressure Sensor, T: Thermo Sensor | | | | |
| | | | | None: Japanese Standard "JIS" | | | | |
| | | | | 950: N. American Design Standard | | | | |